

## 020-1100 Remote Pull Handle

## 020-1150 Two Point Free-Float Pull Handle



This product is designed for entrance doors on RV and specialty vehicles where it is desirable to have the exterior handle remotely mounted from the inside release and rotary latch. It features a large automotive styled exterior pull handle and is adaptable for power locking.

- Entrance and compartment doors with thickness of 2.00" (50.8mm) minimum

### **FEATURES/BENEFITS:**

- Automotive style pull handle and latch mechanism
- Smooth opening/closing action
- Comfortable finger access
- Adaptable for power door lock actuation
- Non-handed design
- The pull handle can also be mounted in vertical or horizontal orientation
- Molded gasket for flange of housing and paddle leg provides resistance to water infiltration

### **Global Locations:**

**TriMark Corporation**  
500 Bailey Avenue  
P.O. Box 350  
New Hampton, Iowa 50659  
United States  
Tel: 641-394-3188  
Fax: 641-394-2392  
1-800-447-0343  
[www.trimarkcorp.com](http://www.trimarkcorp.com)

**TriMark Europe**  
Cedar Court  
Walker road  
Bardon Hill  
Coalville LE67 1TU  
United Kingdom  
Tel: +44(0)1530 512460  
Fax: +44(0)1530 512461  
[www.trimarkeu.com](http://www.trimarkeu.com)

**TriMark (Xuzhou)**  
Building A5 Jingwu Road  
Xuzhou Economic  
Development Zone  
Xuzhou, Jiangsu  
221004 PR China  
Tel: +86 516 8773 0018  
Fax: +86 516 8773 0058  
[www.trimarkcn.com](http://www.trimarkcn.com)



TriMark. Interactive. Product. Selector



TriMark



TriMark Corporation

### AVAILABLE:

- Master keyed lock key cylinder
- Lock can be keyed to match other TriMark door products with KeyOne™ Plus for a single-key system, keyed alike or provided non-locking



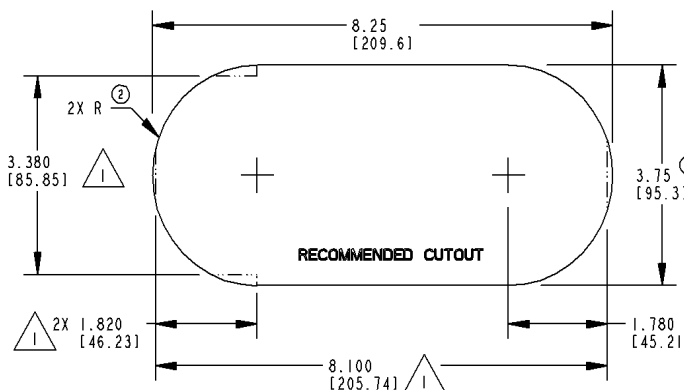
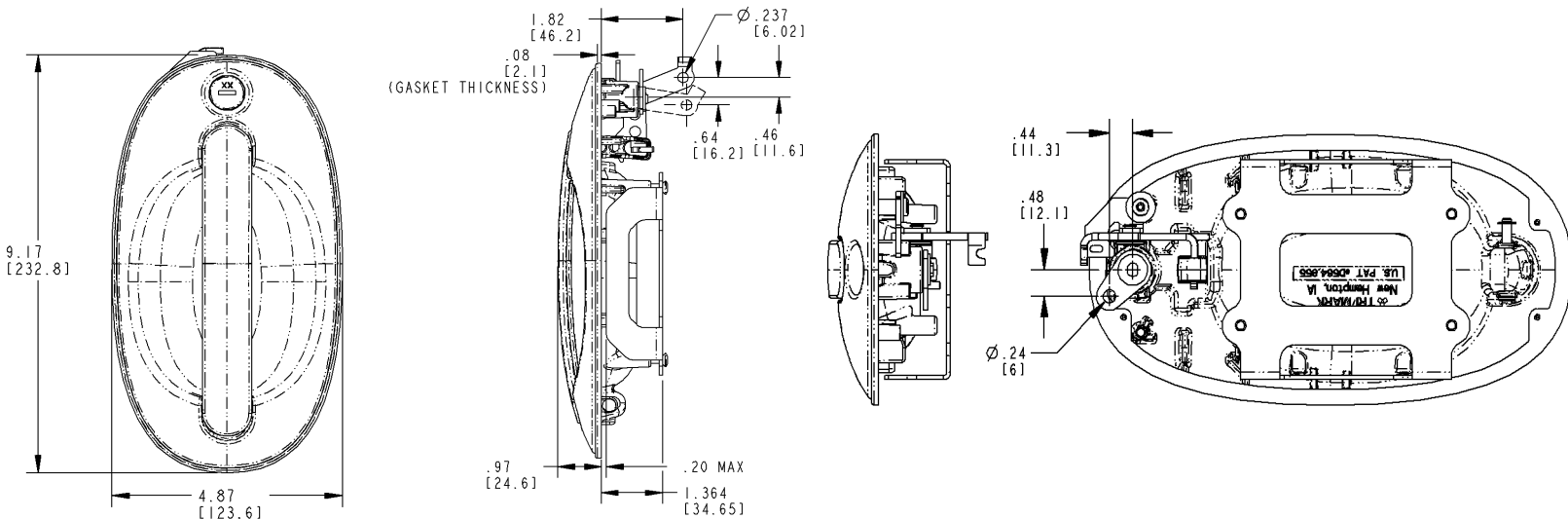
### MATERIAL:

- Sturdy die cast zinc alloy paddle and housing
- Molded gaskets (included)

### INSTALLATION:

- Easy to install with (4) #8-32 UNC mounting screws (not included)
- Recommended mounting torque 30 in-lbs (3.4 N-m)

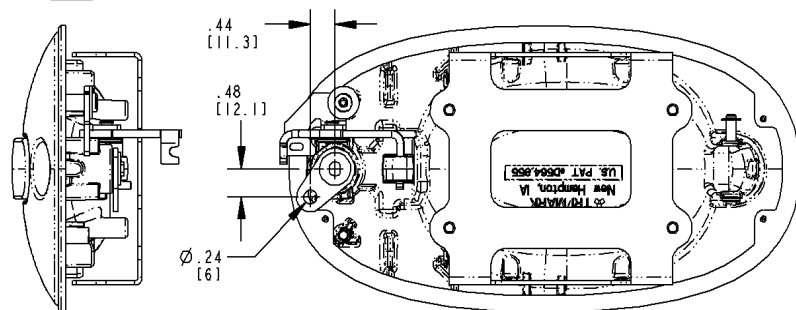
For more information visit  
[www.trimarkcorp.com](http://www.trimarkcorp.com)



REVISION	ECO	ECO BY	DESCRIPTION
A	PRE-RLSE	ASP 09/24/07	CREATED
1	RLSE	ASP 09/25/07	RELEASED
2	12641	RLC 6-6-08	UPDATED VIEWS & DIMENSIONS. ADDED ALTERNATE CUTOUT OPTION NOTES.

NOTES: UNLESS OTHERWISE SPECIFIED;

② ① ALTERNATE CUTOUT OPTION.



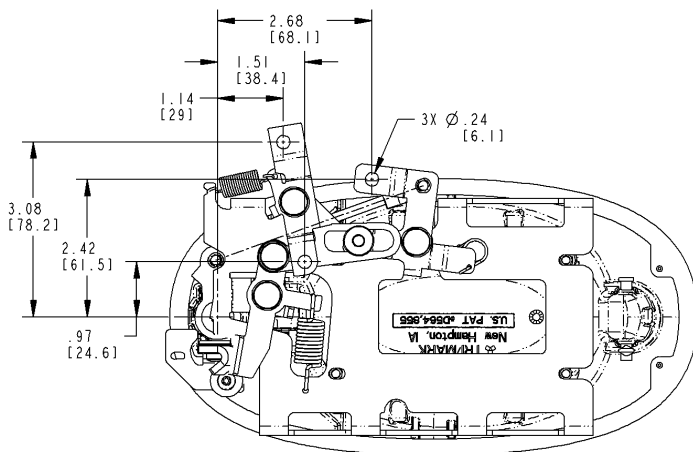
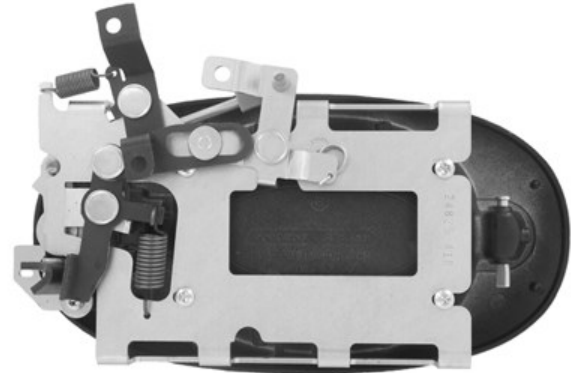
### FINISH:

- Black powder coated housing with black powder coated paddle or chrome plated paddle
- Optional chrome plated housing

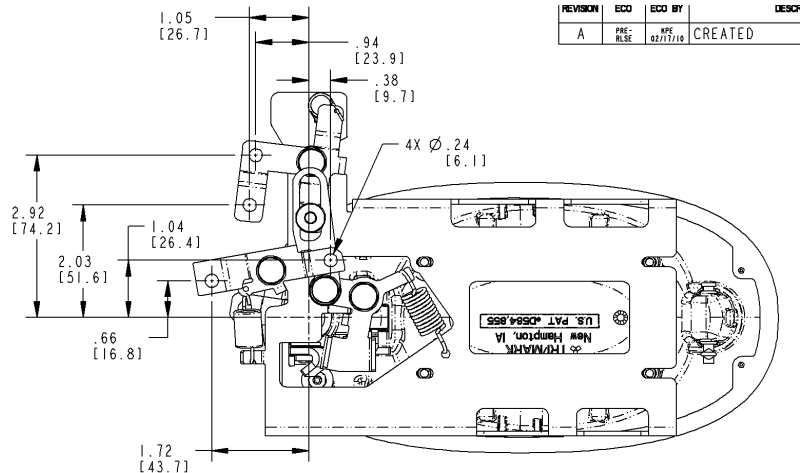
**NOTE:** The 020-1150 is not available for sale to the ambulance market or any patient transport vehicle until further notice.

Individual part dimensions are for reference only. Refer to individual part drawings for complete dimensions, specifications, and installation procedures. Engineering assistance and application drawings are available.

Design Patent No. D564,855

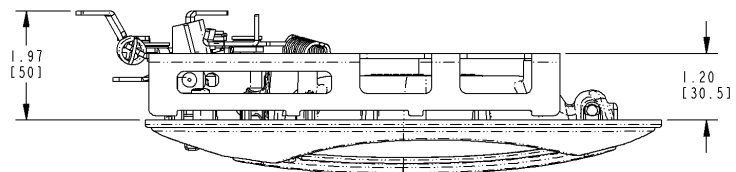
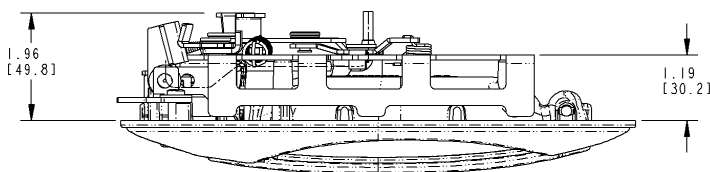


Horizontal Handle Mounting With Horizontal Rod Pull



Horizontal Handle Mounting With Vertical Rod Pull

REVISION	ECO	ECO BY	DESC
A	REC	02/17/10	CREATED



**CAUTION:** Applications of this product may fall within the requirements of FMVSS 206 (ECE R11) and SAE J839 safety standards. These safety related requirements are dependent on door application, e.g. front and rear hinged doors, sliding doors, or hinged upward swinging doors. The entire door hardware system must be included in the design/analysis process latch, handle, lock mechanism, cables/rods/linkages, fasteners, hinges, etc. This ensures compatibility of all components within the hardware system. If FMVSS 206 (ECE R11) is a requirement, then all of the components within the door system must comply with strength, inertia and locking requirements as specified within the Standard. Note that this product complies with FMVSS 206 (ECE R11) when tested in accordance with SAE J839 and that this product meets FMVSS 206 (ECE R11) locking requirements and may be used in FMVSS 206 (ECE R11) applications pending TriMark application approval.